

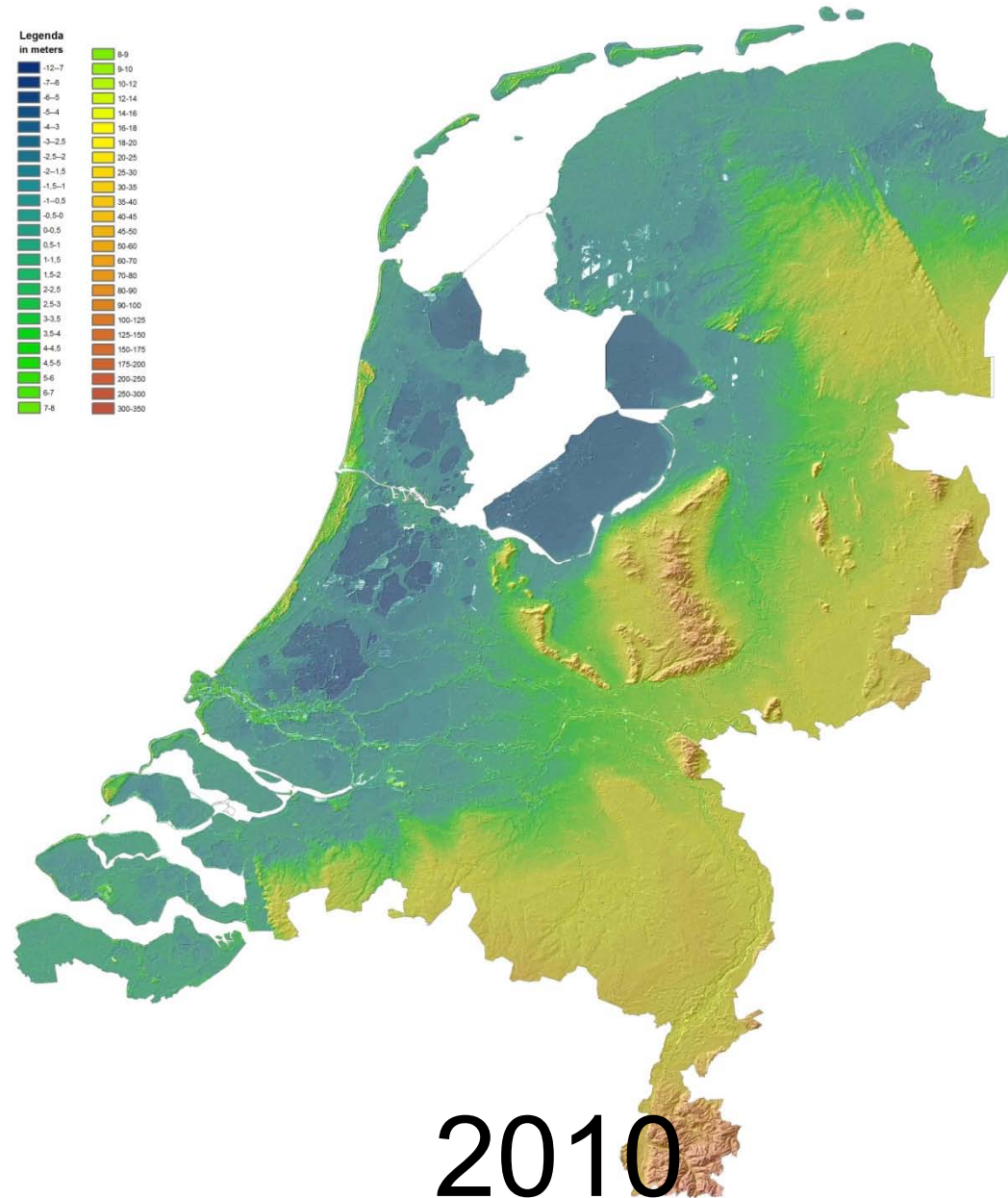
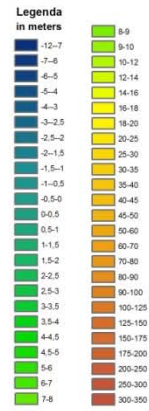
“The water ‘s warning...”

or The Dutch and their waterfront



Nicoline Loeper, Matthias Ott 2012

Actueel Hoogtebestand Nederland (AHN)
met reliëf-schaduwwerking



2010

Hate? Love?

Memory of Holland (Hendrik Marsman, 1936)

Thinking of Holland

I picture broad rivers
meandering through
unending lowland:

rows of incredibly
lanky poplars, huge
plumes that linger
at the edge of the world;
in the astounding

distance small-holdings
that recede into space
throughout the country;

clumps of trees, town-lands,
stumpy towers, churches
and elms that contribute
to the grand design;

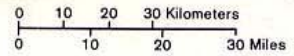
a low sky, and the sun
smothering slowly in mists, pearl-gray,
mother-of-pearl;

and in every county
the water 's warning
of more catastrophes
heard and heeded.

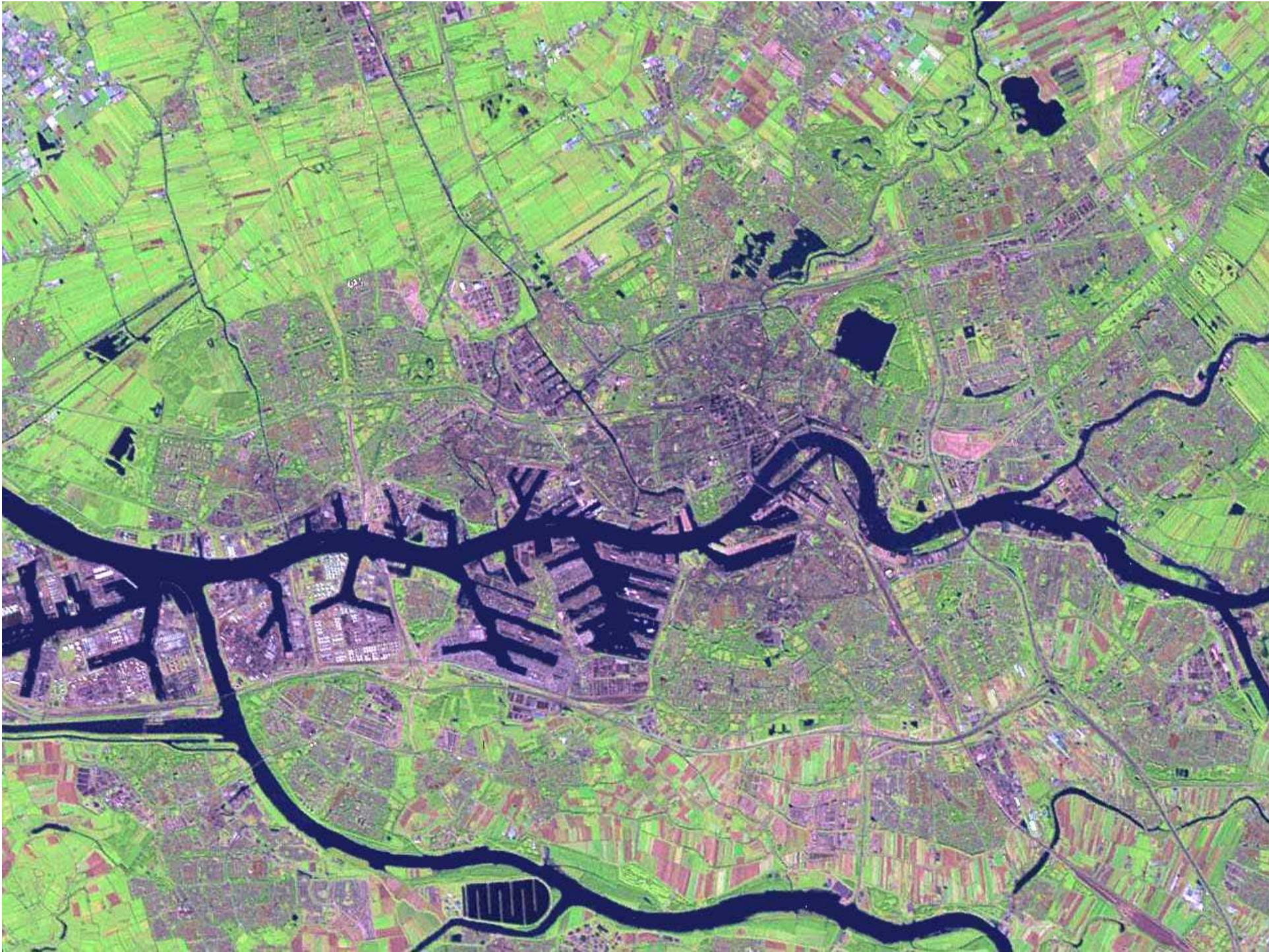


Netherlands

- International boundary
- - - Province boundary
- ★ National capital
- ⊙ Province capital
- +— Railroad
- +— Expressway
- +— Road







Context





1835 people died, 100.000 people homeless
10 thousands of animals died, farmland wasted

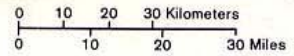




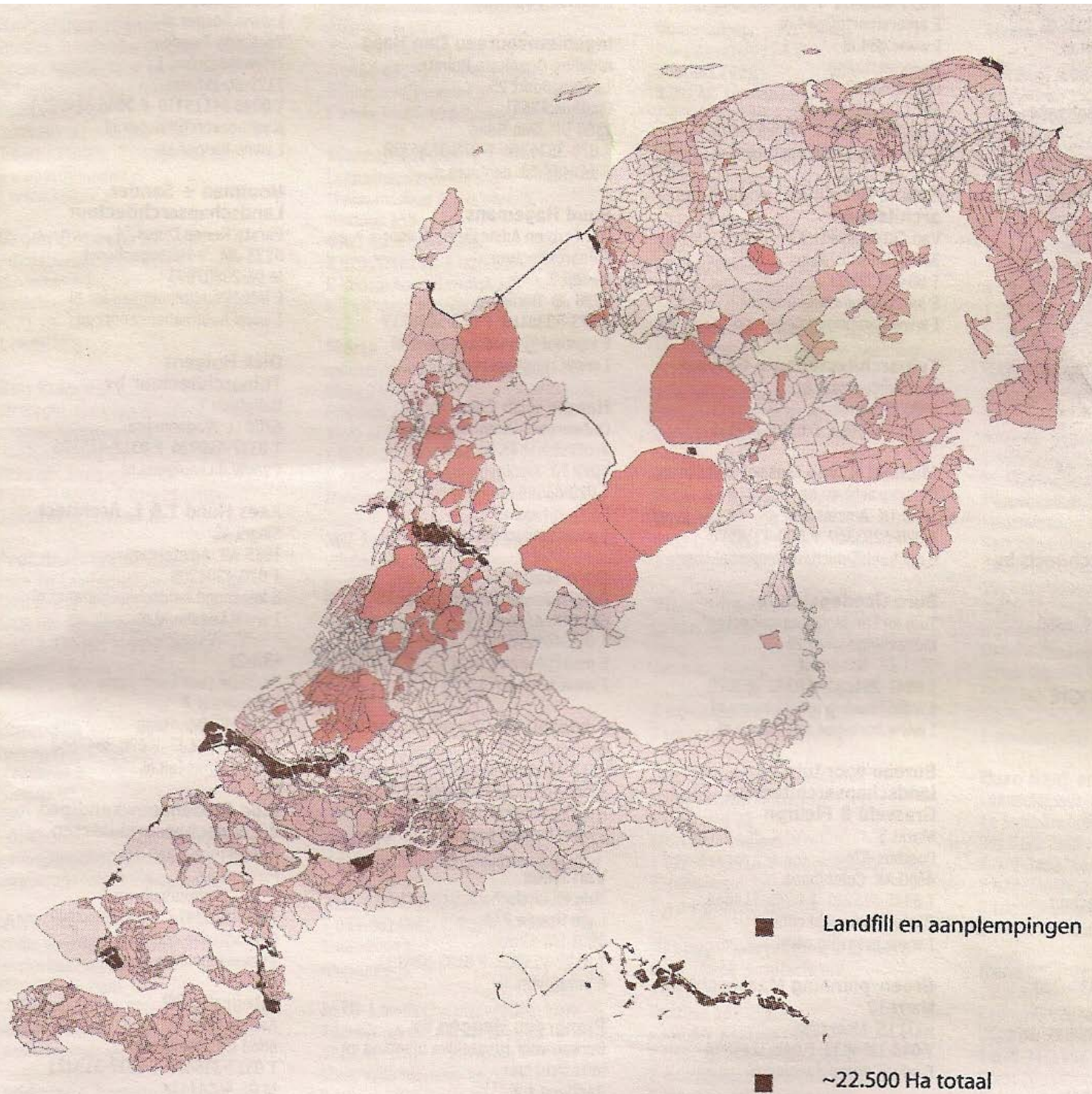
© Aart Klein / nfa, coll. Nederlands fotomuseum

Netherlands

- International boundary
- - - Province boundary
- ★ National capital
- ⊙ Province capital
- +— Railroad
- +— Expressway
- +— Road



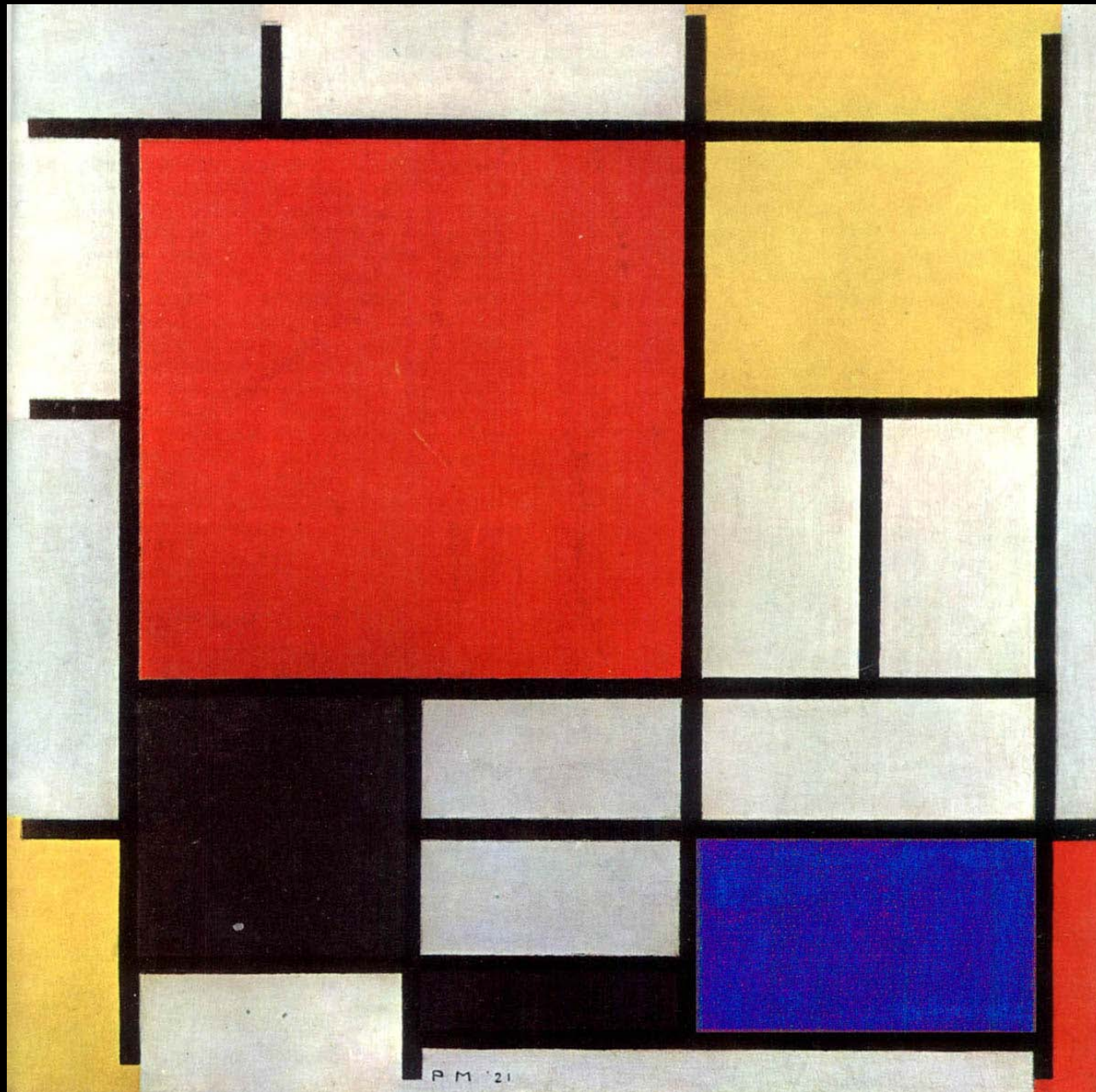


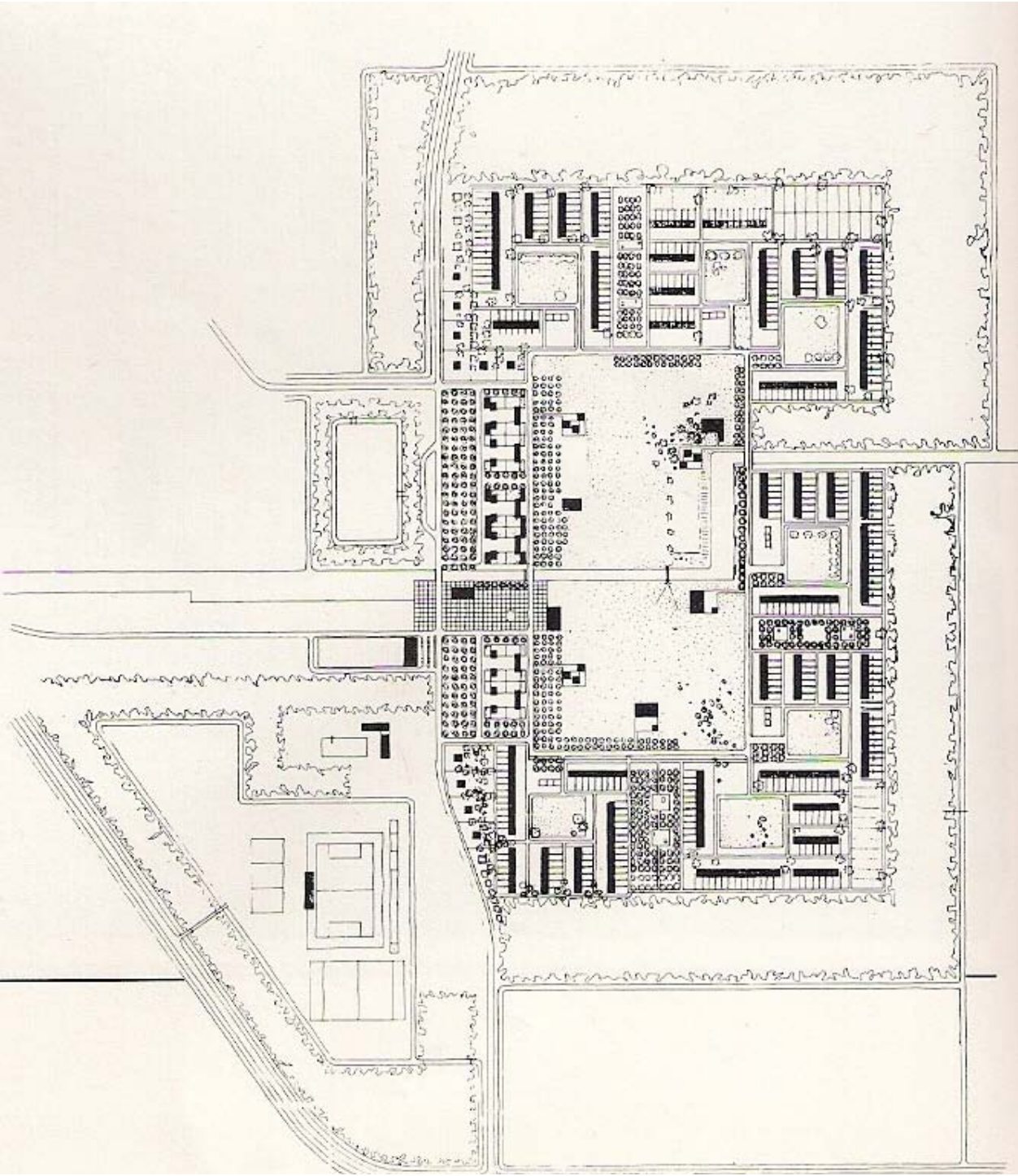












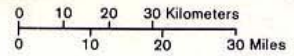






Netherlands

- International boundary
- - - Province boundary
- ★ National capital
- ⊙ Province capital
- +— Railroad
- +— Expressway
- +— Road











Rijkswaterstaat - 27 maart 2007





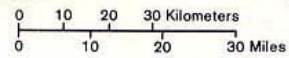




Design 1

Netherlands

- International boundary
- - - Province boundary
- ★ National capital
- ⊙ Province capital
- +— Railroad
- +— Expressway
- +— Road

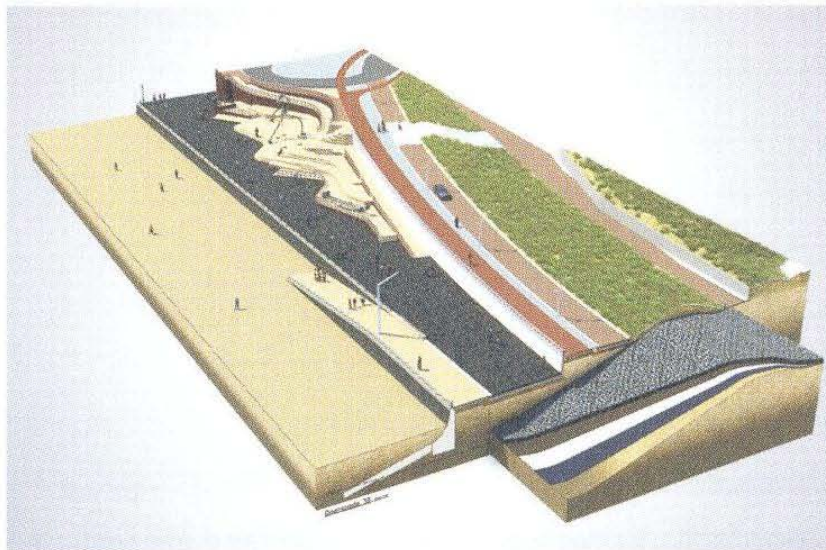




Sola Morales/ Age Fluitman:
verlenging boulevard Scheveningen (2010-2012)



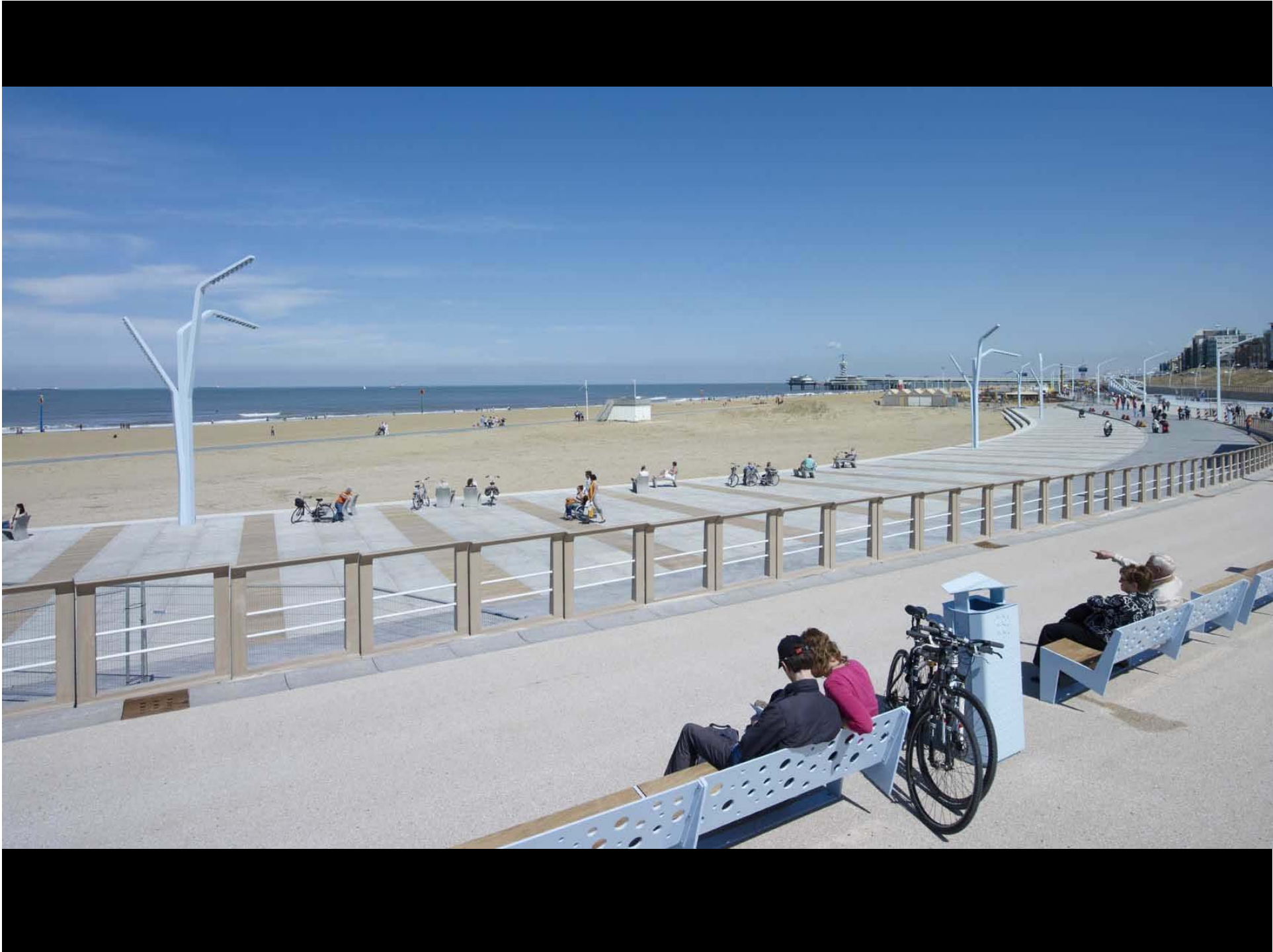
Impressietekening van de nieuwe boulevard.



Een belangrijk principe: onder de boulevard zorgt een betonnen dijk voor de veiligheid van het achterland.



Volgens het ontwerp is de boulevard niet langer een rechte streep tussen kust en zee, maar volgt het de historische en kromme kustlijn.



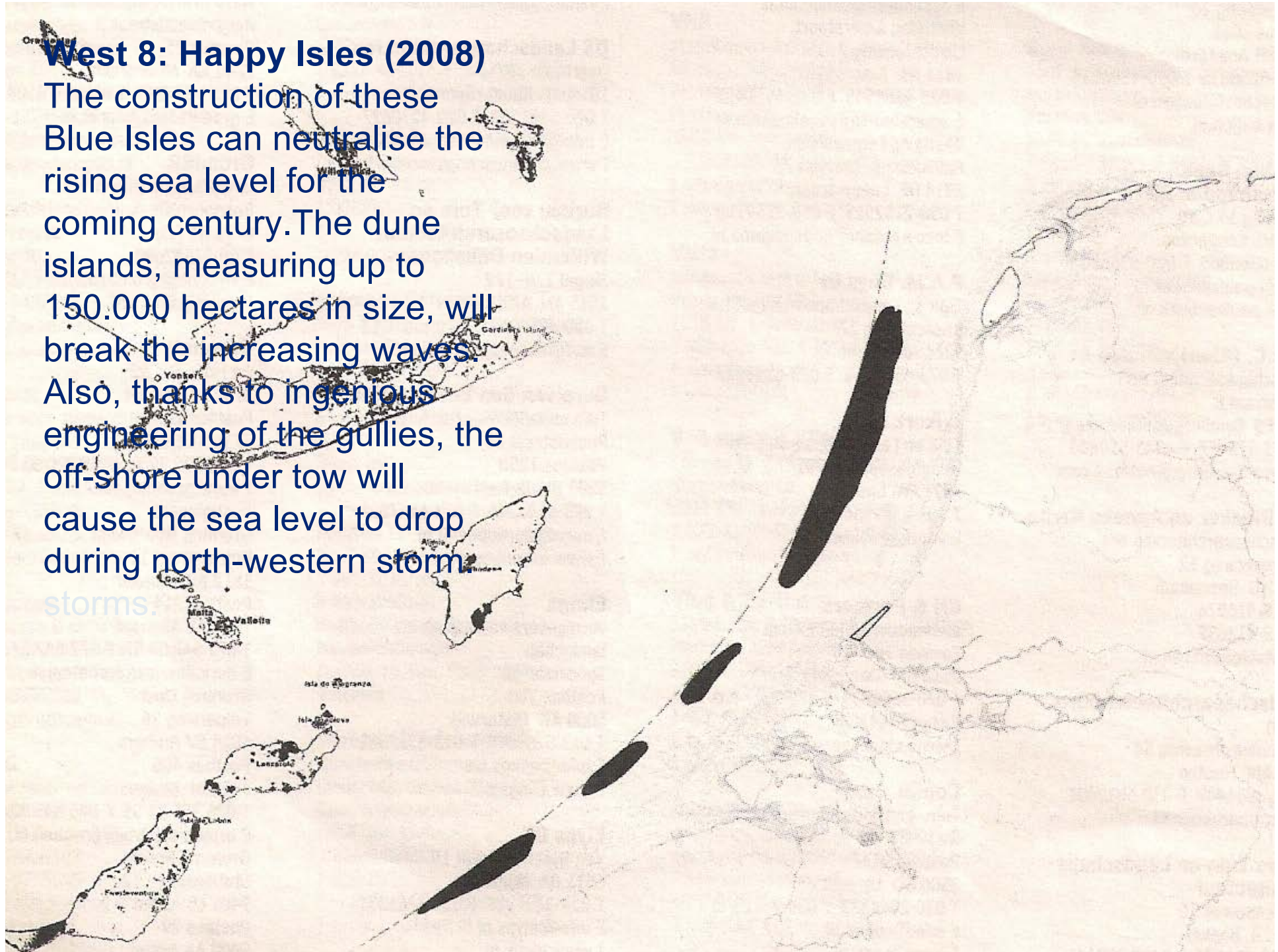




Design 2

West 8: Happy Isles (2008)

The construction of these Blue Isles can neutralise the rising sea level for the coming century. The dune islands, measuring up to 150.000 hectares in size, will break the increasing waves. Also, thanks to ingenious engineering of the gullies, the off-shore under tow will cause the sea level to drop during north-western storm storms.





The end

