



# Introduction to Waterfront Redevelopment

**Branislav MACHALA**

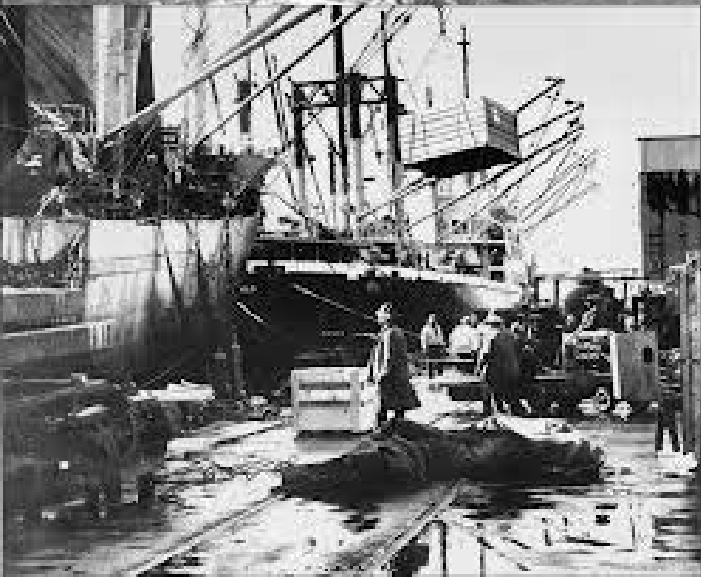
Charles University in Prague, Faculty of Science  
Dep. of Social Geography  
and Regional Development

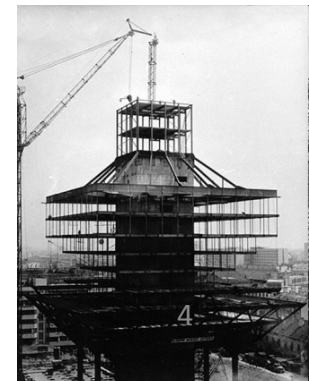
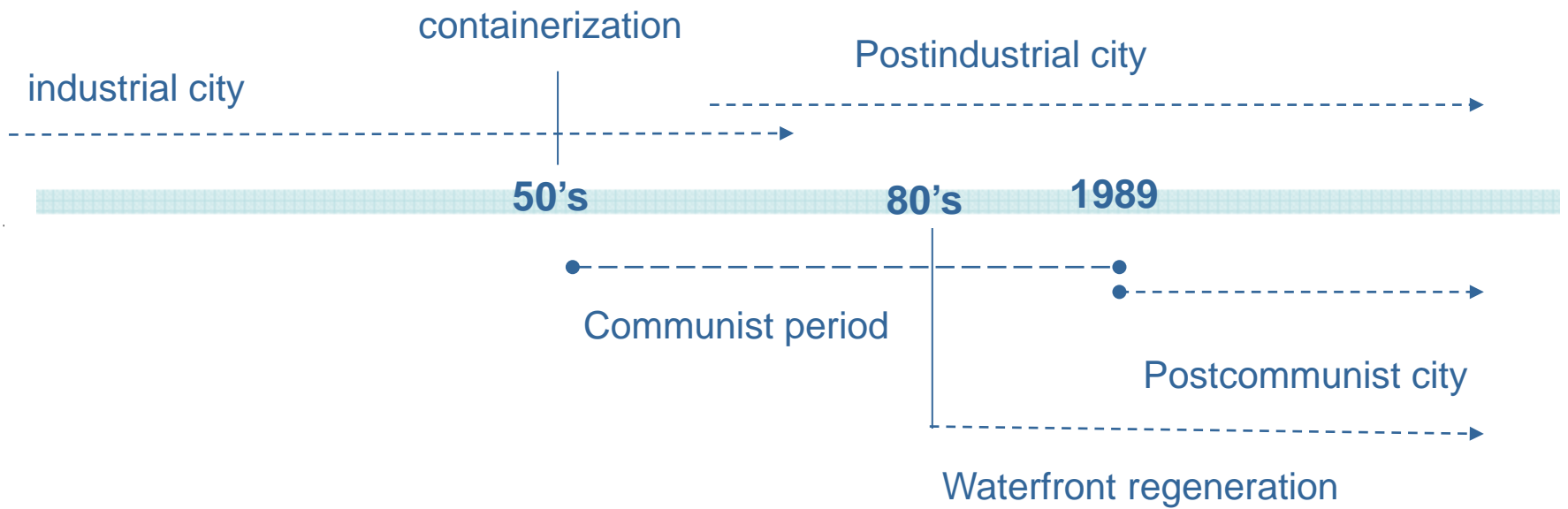


# CONTENT

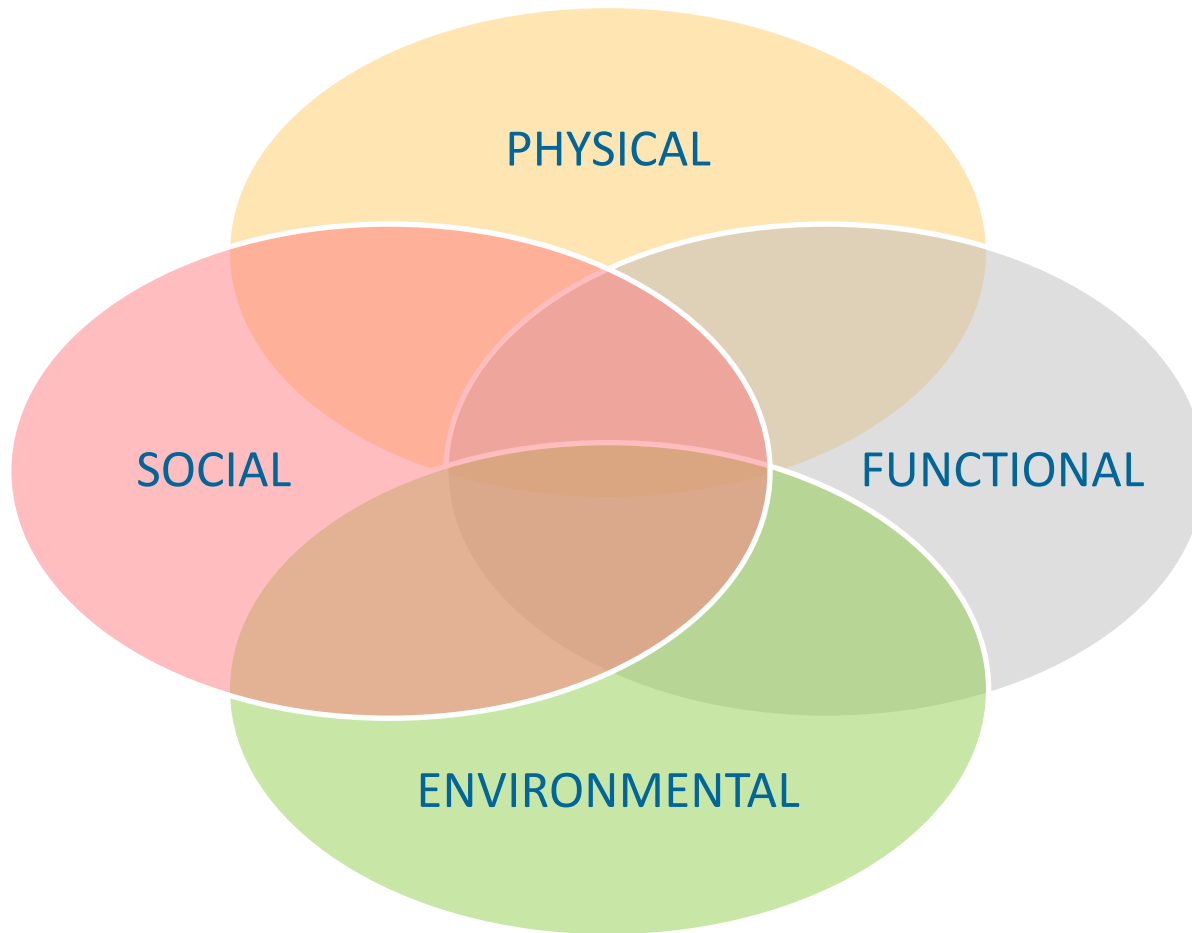


- 1. WATERFRONT REGENERATION AS A PROCES**
- 2. BRATISLAVA'S WATERFRONT**
- 3. CURRENT CHALLENGES**





# Dimensions of change





# The London Plan

Home > Blue ribbon network

Home

## Policy Areas

Introduction

Broad development

Living in London

Working in London

Transport in London

Enjoying London

Climate change

Designs on London

## Blue Ribbon Network

- Defining the Blue Ribbon network

- Natural resources, forces and human heritage

- Sustainable growth priorities

- Enjoying the Blue Ribbon network

- Design and safety

- London's water spaces

Sub-regions

Implementation

## The London Plan download section



The complete [London Plan](#).  
[Maps and diagrams](#).

**The content of this website is no longer current** - please see [The London Plan 2011](#).

## Blue ribbon network policies

The Blue Ribbon Network has an essential role to play in delivering all the key elements of the Mayor's vision of an exemplary, sustainable world city.

Water is a valuable and scarce asset within London and its use must be set within sustainable limits which prioritise those uses and activities that need a waterside location.

The Mayor has a visionary approach to the Blue Ribbon Network, taking the water as the starting point for decision making. This approach is encapsulated by the following Blue Ribbon Network Principles, which reflect the objectives set out in the Introduction, and which should structure relevant decision-making.

### Blue ribbon network policies

- [Defining the Blue Ribbon network](#)
- [Natural resources, forces and human heritage](#)
- [Sustainable growth priorities](#)
- [Enjoying the Blue Ribbon network](#)
- [Design and safety](#)
- [London's water spaces](#)

## Related Links

### London Plan Section

- [Chapter 4 - The crosscutting policies](#)

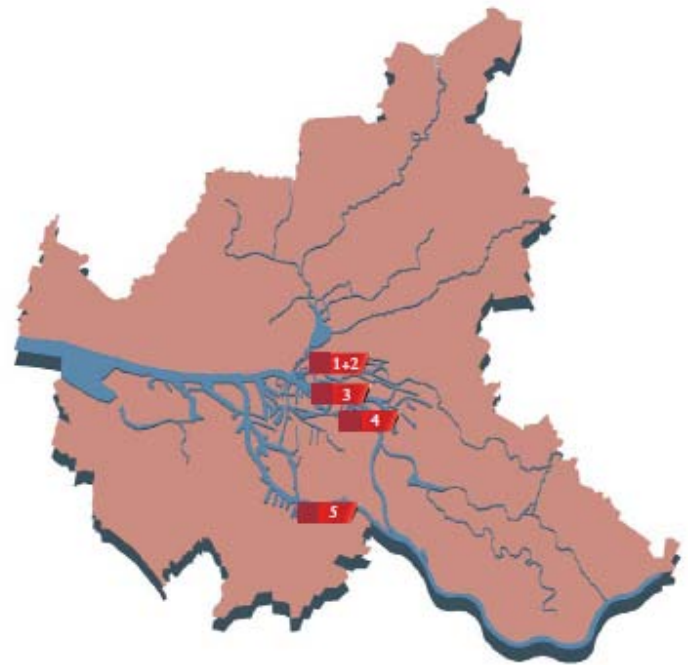
### Other Documents

- [Assessment of Boatyard Facilities on the River Thames PDF](#)
- [Assessment of Boatyard Facilities on the River Thames RTF](#)
- [Safeguarded Wharves on the River Thames PDF](#)
- [Safeguarded Wharves on the River Thames RTF](#)

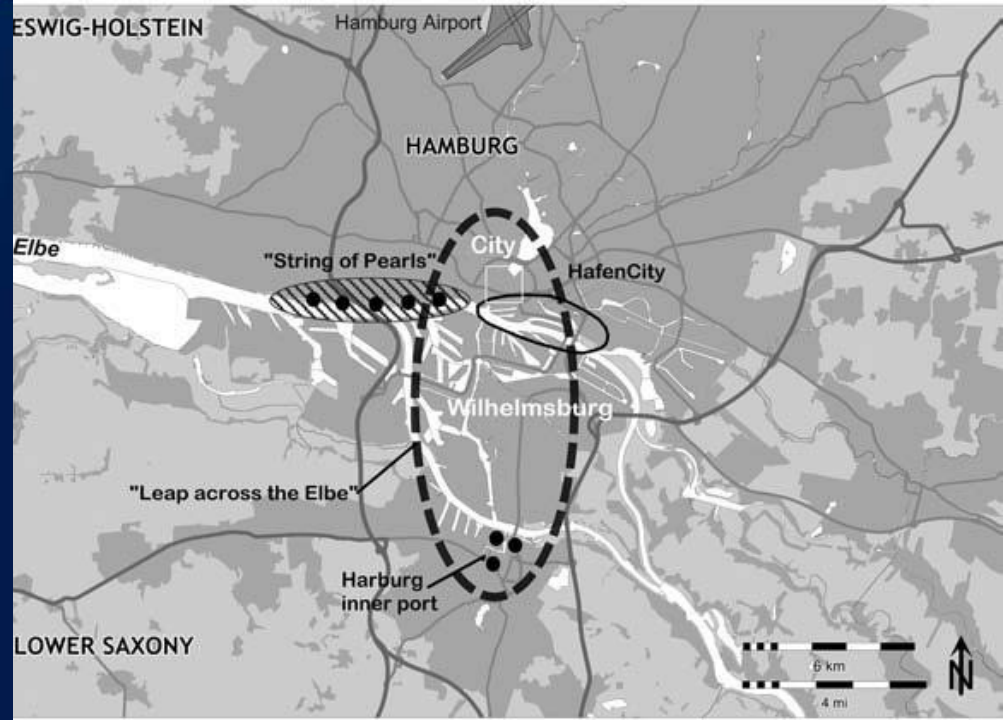
## PDF Documents

Any document in PDF format can be viewed on any computer which has a PDF Viewer. If you don't have a PDF Viewer you can download one for free using the link below.





Encounter with a growing City  
Leap across the Elbe



## Cooperation

### European Territorial Co-operation

#### Danube Region Strategy

EU Strategy for the Danube Region

News

Events

Library

#### Baltic Sea Region Strategy

#### Regions for Economic Change

#### International Cooperation



## EU Strategy for the Danube Region

### Latest News

- [1st Annual Forum of the EU Strategy for the Danube Region](#)
- [Commissioner Hahn crosses the Danube on the Vidin-Calafat Bridge](#)
- [Danube Strategy: Commissioner Johannes Hahn visits Danube region from 27 June to 1 July to take stock of progress](#)

[Previous News](#)

A strategy to boost the development of the Danube Region was proposed by the European Commission on 8 December 2010 ([Commission Communication - EU Strategy for the Danube Region](#)). Member States endorsed the EU Strategy for the Danube Region at the General Affairs Council on 13 April 2011 ([Council Conclusions](#)).

For news and information on the activities and progress of the Strategy, please visit the EUSDR's dedicated website [www.danube-region.eu](http://www.danube-region.eu)





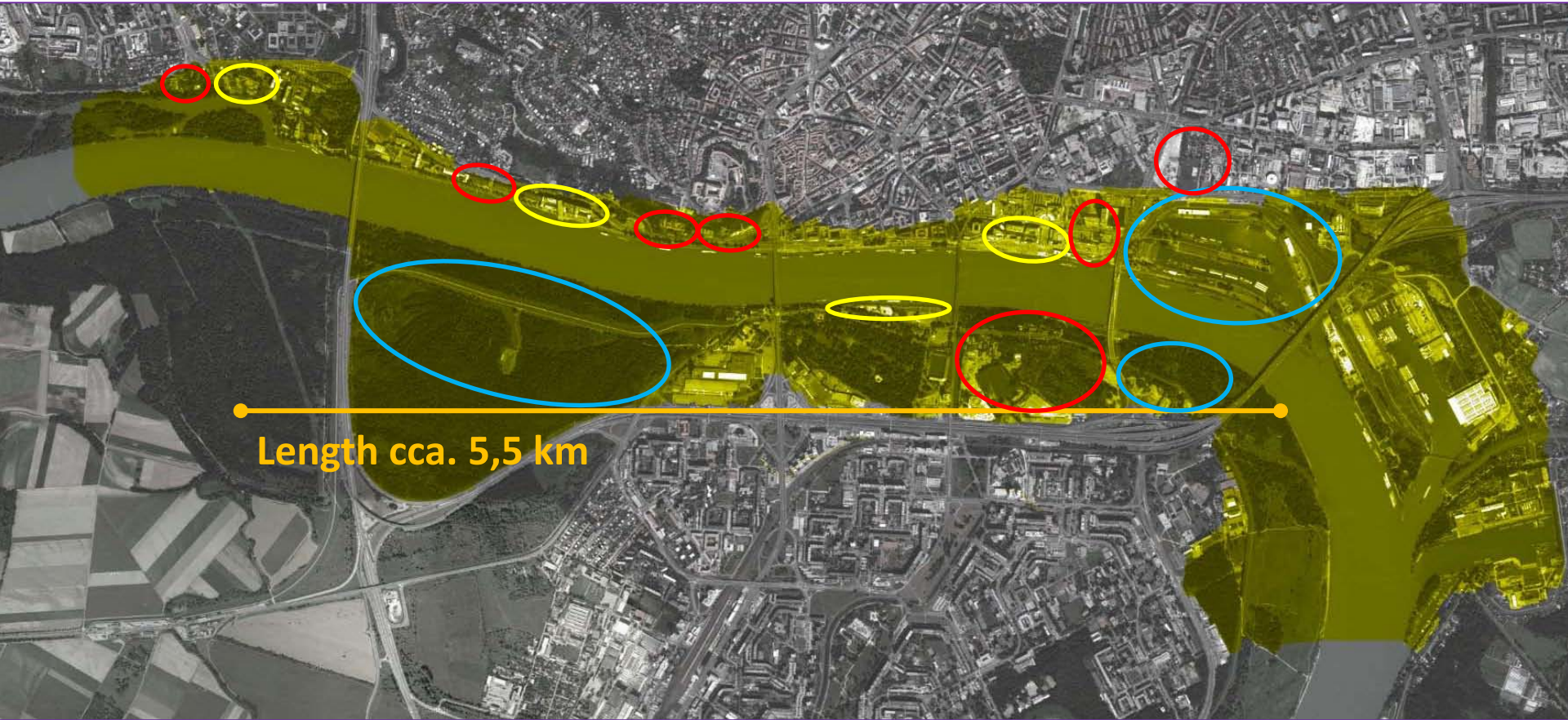


## changing face of the riverside in Bratislava

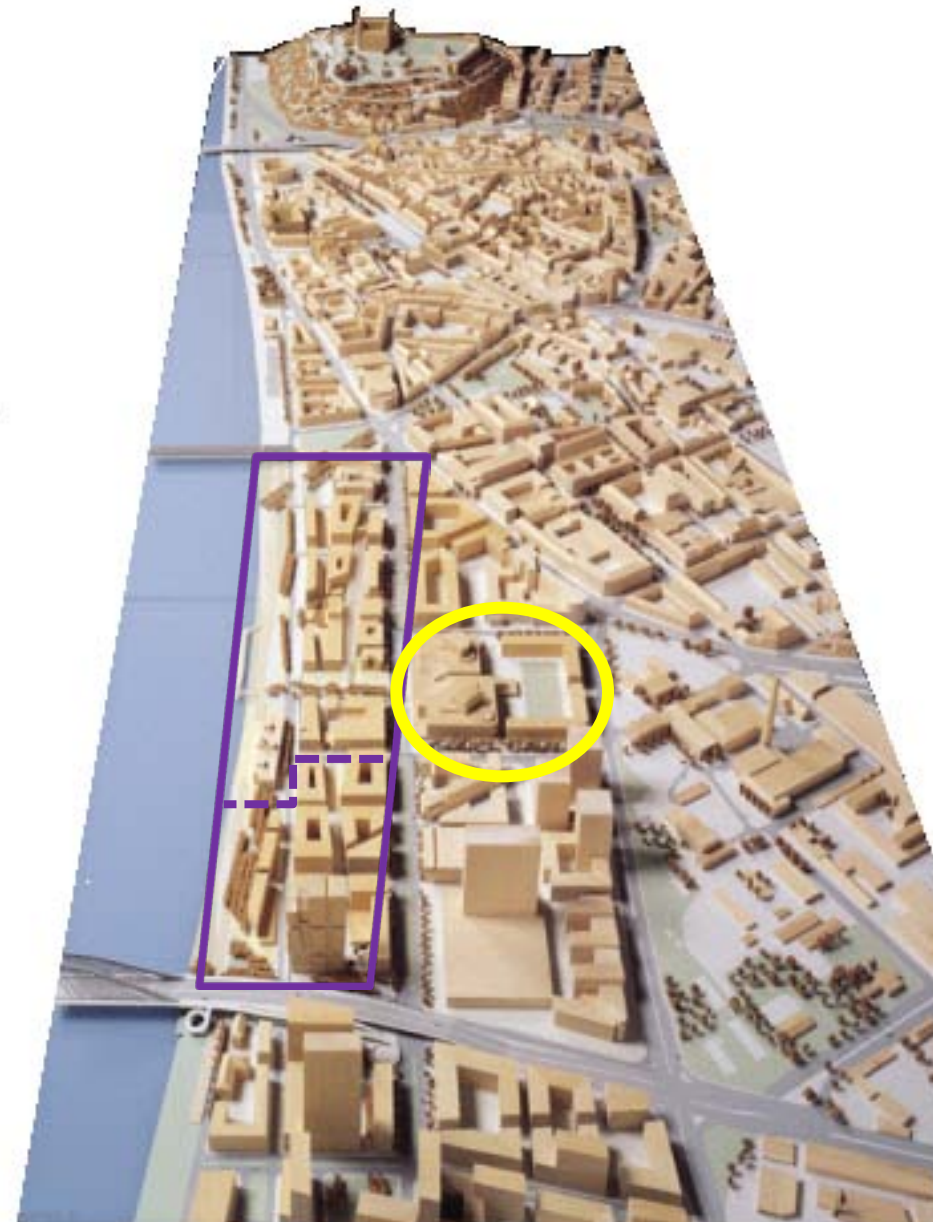




# Bratislava's Waterfront



# SLOVAK NATIONAL THEATRE





# KARLOVESKA COVE





# RIVER PARK



# EUROVEA





# MAGIO BEACH





# FUTURE PROJECTS



# FUTURE PROJECTS



# Impacts on existing environment?

Social



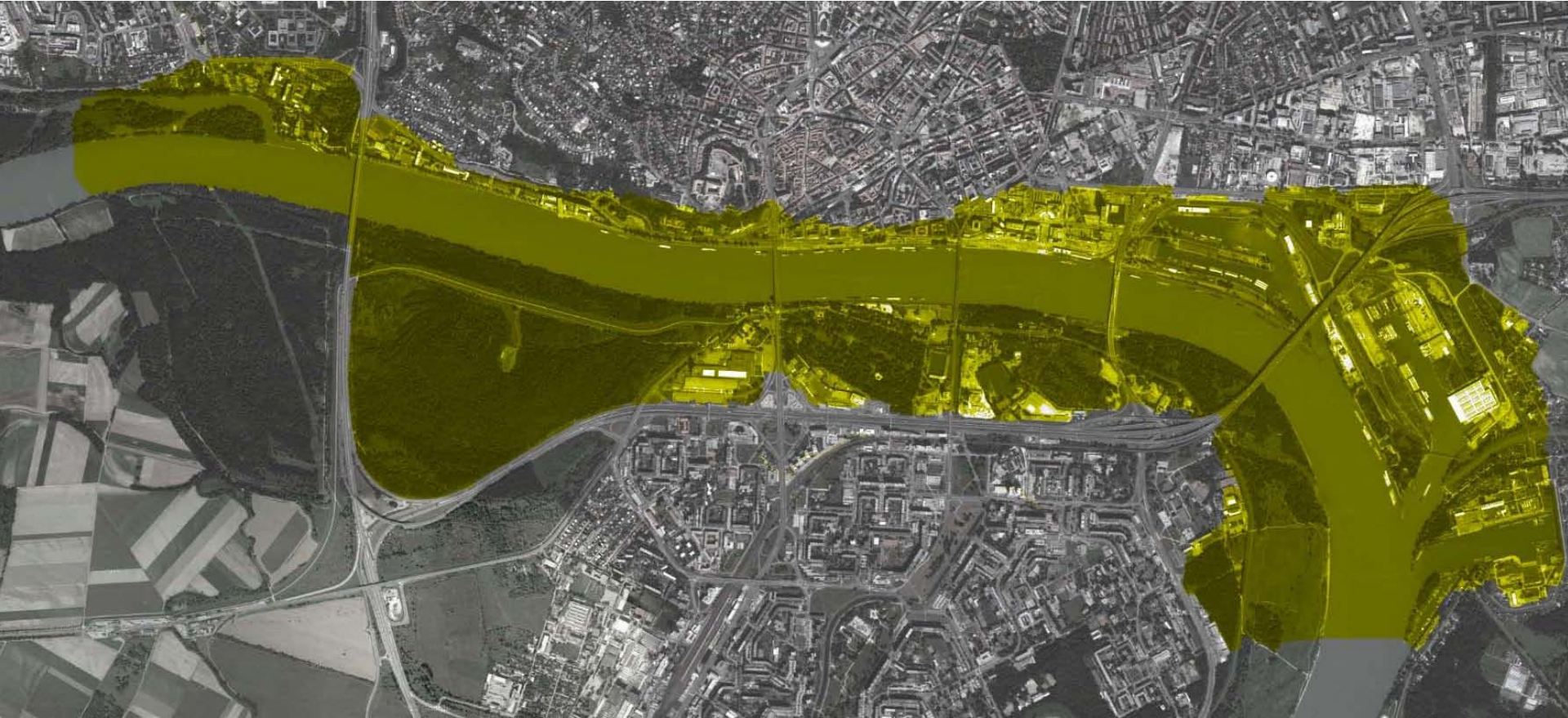
Functional

Strategic



Environmental

# THANK YOU FOR YOUR ATTENTION



Branislav MACHALA  
branislav.machala@gmail.com